



Certificate of Analysis

Sample:KN30713002-003
Harvest/Lot ID: SD070723A
Batch#: SD070723A
Batch Date: 07/07/23
Sample Size Received: 5 gram
Retail Product Size: 2 gram
Ordered : 07/10/23
Sampled : 07/10/23
Completed: 07/14/23

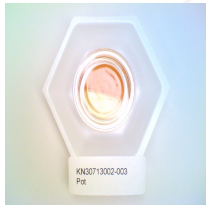
PASSED

Page 1 of 1

Jul 14, 2023 | Haygood Farms

164 West 31ST Suite 106
Chattanooga, TN, 37410, US

PRODUCT IMAGE

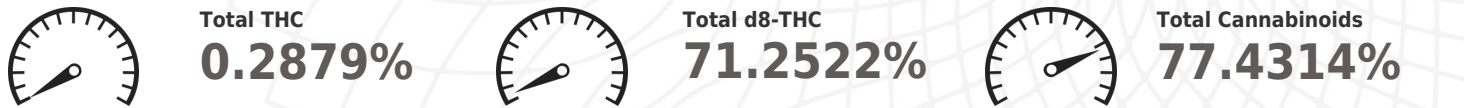


SAFETY RESULTS

Pesticides NOT TESTED	Heavy Metals NOT TESTED	Microbials NOT TESTED	Mycotoxins NOT TESTED	Residuals Solvents NOT TESTED	Filtration NOT TESTED	Water Activity NOT TESTED	Moisture NOT TESTED	Terpenes NOT TESTED

MISC.

Potency **PASSED**



	CBDV	CBDA	CBGA	CBG	CBD	THCV	CBN	D9-THC	D8-THC	D10-THC	CBC	THCA
%	ND	2.7058	0.0425	ND	0.5442	0.0453	0.653	0.2239	71.2522	ND	1.8915	0.073
mg/g	ND	27.058	0.425	ND	5.442	0.453	6.53	2.239	712.522	ND	18.915	0.73
LOD	0.001	0.001	0.001	0.001	0.001	0.001	0.001	0.001	0.001	0.001	0.001	0.001
	%	%	%	%	%	%	%	%	%	%	%	%

Analyzed by: 2657, 2990 Weight: 0.2089g Extraction date: 07/13/23 09:36:51 Extracted by: 2837

Analysis Method : SOP.T.30.031.TN & SOP.T.40.031.TN Expanded Measurement of Uncertainty: Flower Matrix d9-THC: ± 0.100, THCA: ± 0.124, TOTAL THC ± 0.112. These uncertainties represent an expanded uncertainty expressed at approximately the 95% confidence level using a coverage factor k=2 for a normal distribution.

Analytical Batch : KN003952POT

Instrument Used : E-SHI-008

Running on : N/A

Reviewed On : 07/14/23 13:11:18

Batch Date : 07/13/23 08:16:43

Dilution : N/A

Reagent : 051123.02; 100422.02; 071023.R02; 071023.R01; 102722.18; 051123.09

Consumables : 302110210; 22/04/01; 220725; 230105059D; 239146; 947B9291.271; GD210005; 1350331; 6121219; 600054; IP250.100

Pipette : E-VWR-120

Full spectrum cannabinoid analysis utilizing High Performance Liquid Chromatography with UV/PDA detection (HPLC-UV/PDA). All cannabinoids have an LOQ of 0.01%.

This report shall not be reproduced, unless in its entirety, without written approval from Labstat. This report is an Labstat certification. The results relate only to the material or product analyzed. Test results are confidential unless explicitly waived otherwise. Void after 1 year from test end date. Cannabinoid content of batch material may vary depending on sampling error. IC=In-control QC parameter, NC=Non-controlled QC parameter, ND=Not Detected, NA=Not Analyzed, ppm=Parts Per Million, ppb=Parts Per Billion. Limit of Detection (LoD) and Limit Of Quantitation (LoQ) are terms used to describe the smallest concentration that can be reliably measured by an analytical procedure. RPD=Reproducibility of two measurements. Action Levels are State determined thresholds variable based on uncertainty of measurement (UM) for the analyte. The UM error is available from the lab upon request.The "Decision Rule" for the pass/fail does not include the UM. The limits are based on F.S. Rule 64-4.310.

Sue Ferguson

Lab Director

State License # n/a
ISO Accreditation # 17025:2017

Signature

07/14/23

Signed On